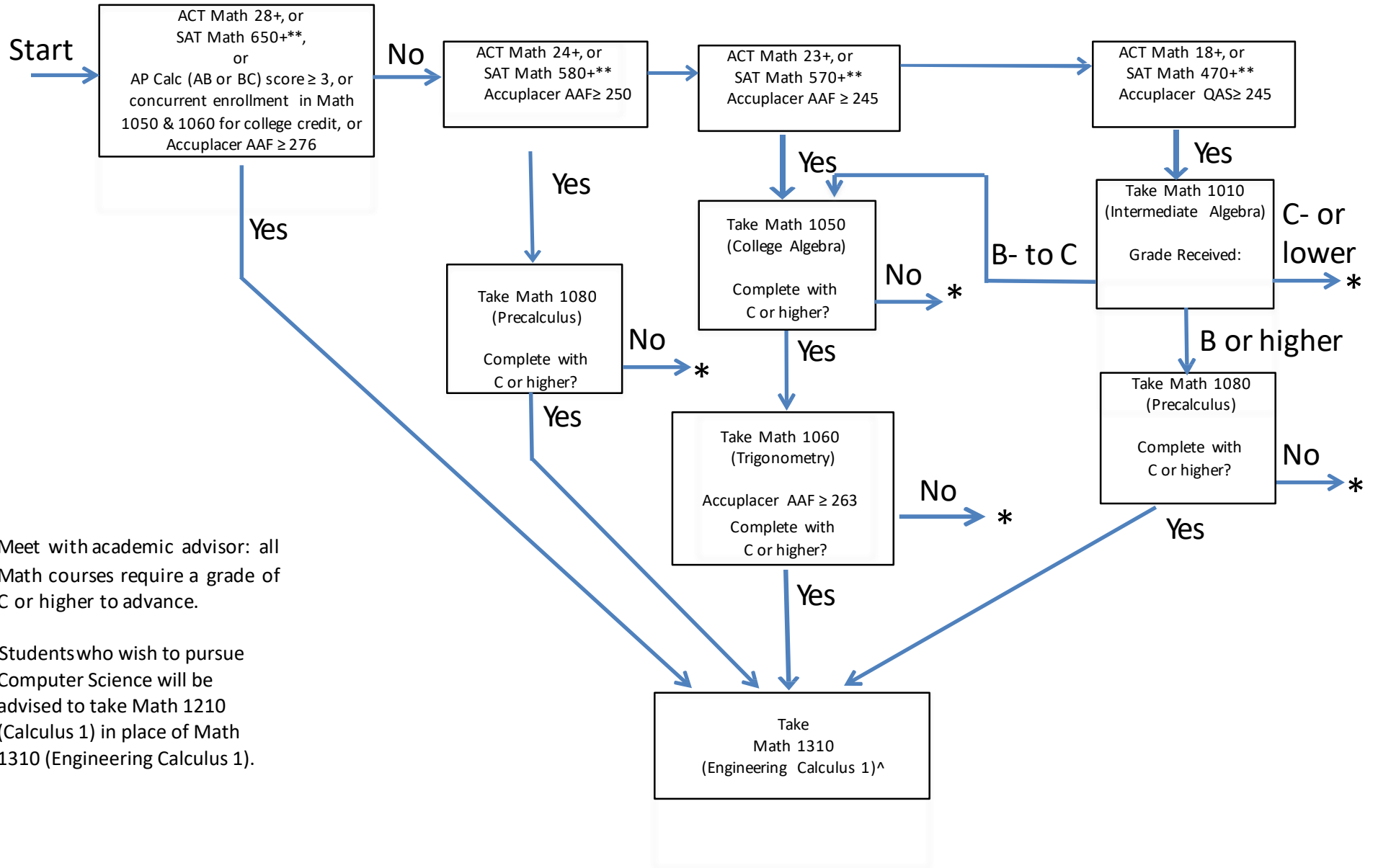


Engineering Math Preparation



* Meet with academic advisor: all Math courses require a grade of C or higher to advance.

^ Students who wish to pursue Computer Science will be advised to take Math 1210 (Calculus 1) in place of Math 1310 (Engineering Calculus 1).

If you think you are prepared for a more advanced math course than the one that you placed into based on your test score, you can take the Accuplacer test (testingcenter.utah.edu/students/placement-tests/math-placement.php) or attend a Math Bootcamp (math.utah.edu/ugrad/bootcamp.html)