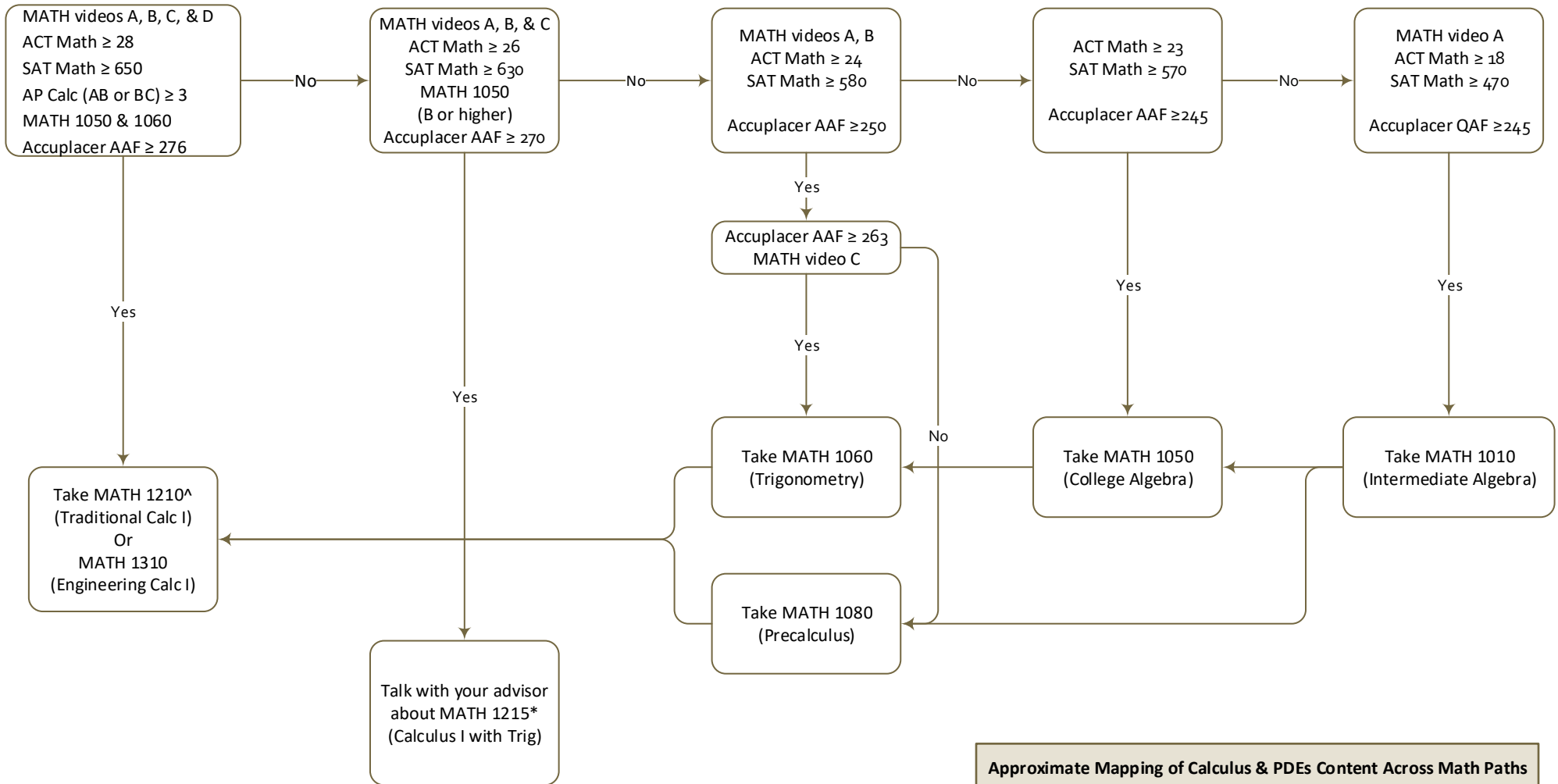


**Mechanical Engineering 2022-2023 Path to Calculus**  
mech.utah.edu/academics



Approximate Mapping of Calculus & PDEs Content Across Math Paths				
<b>Traditional Math Path (17hrs*)</b>	<b>MATH 1210^</b> Calculus I 4hr	<b>MATH 1220</b> Calculus II 4hr	<b>MATH 2210</b> Calculus III 3hr	<b>MATH 3150</b> PDEs 2hr
<b>Engineering Math Path (16hrs*)</b>	<b>MATH 1310</b> Engineering Calc I 4hr	<b>MATH 1320</b> Engineering Calc II 4hr	<b>MATH 3140</b> Vector Calc/PDEs 4hr	
<b>Accelerated Engineering Math Path** (10hrs*)</b>	<b>MATH 1311</b> Accel Engin Calc I 4hr (Honors)	<b>MATH 1321</b> Accel Engin Calc II 4hr (Honors)	<b>MATH 3150</b> PDEs 2hr	
* Including MATH 2250 ODEs & Linear Algebra				
** Requires AP Calc AB score of 4 or better or AP Calc BC score of 3 or better				
^ Or MATH 1215				

\* This is a pilot course with limited seating. Talk with your advisor to see if it is a good fit for you.  
^ Students who want to pursue a Computer Science degree or minor are advised to take MATH 1210 (Calculus I) in place of MATH 1310 (Engineering Calculus I)